

ORDINANCE NO. _____

AN ORDINANCE DECLARING A CERTAIN CITY-OWNED STREET DEPARTMENT COLD MILLING MACHINE AS SURPLUS; WAIVING FORMAL BIDDING REQUIREMENTS AND AUTHORIZING THE ACQUISITION OF A HYDRAULIC EXCAVATOR FOR THE NORTH LITTLE ROCK STREET DEPARTMENT IN EXCHANGE FOR THE SURPLUS MILLING MACHINE; DECLARING AN EMERGENCY; AND FOR OTHER PURPOSES.

WHEREAS, Ark. Code Ann. § 14-58-303 requires City purchases exceeding the amount of \$20,000 to follow statutory procedures of local government advertisement and opening of sealed bids which *may only be waived in exceptional situations where bidding is deemed not feasible or practical*; and

WHEREAS, the City owns a certain piece of equipment, specifically a 2003 Wirtgen W1900DC Cold Milling Machine, which has not been used by the North Little Rock Street Department (“Street Department”) for quite some time; and

WHEREAS, the Street Department has a need for a hydraulic excavator and has researched options (including cost and delivery) for this particular piece of equipment; and

WHEREAS, Equipment Resource Management, Inc. (“ERM”) of Little Rock, Arkansas, has the particular construction equipment that is needed by the Street Department in its inventory and has submitted a proposal to provide a Hyundai R60CR-9A Hydraulic Excavator, equipped pursuant to Street Department specifications; and

WHEREAS, ERM has agreed to provide the Hyundai Hydraulic Excavator at a price of \$95,659.00 (F.O.B. NLR, AR) in an even exchange for the 2003 Wirtgen W1900DC Cold Milling Machine which is no longer in use by the Street Department, giving a trade-in allowance of \$95,659.00 (see proposal attached hereto as Exhibit A; and

WHEREAS, there is usually an extensive time lag in obtaining such equipment, and the Street Department believes that \$95,659.00 for the herein-described excavator is a competitive price as well as a fair market trade-in value for the cold milling machine, and it is in its best interests that the City equally exchange the cold milling machine for the hydraulic excavator.

NOW, THEREFORE, BE IT ORDAINED BY THE CITY COUNCIL OF THE CITY OF NORTH LITTLE ROCK, ARKANSAS:

SECTION 1: That a 2003 Wirtgen W1900DC Cold Milling Machine (0920-0175) currently owned by the City is hereby declared to be surplus equipment and having a value of \$95,659.00.

SECTION 2: That formal bidding is hereby waived in connection with the acquisition of a Hyundai R60CR-9A Hydraulic Excavator, and the Director of Commerce is

directed to exchange the surplus equipment described in Section 1 above for the herein Hydraulic Excavator with a sales price of \$95,659.00 (see proposal attached hereto as Exhibit A and incorporated herein by reference), resulting in an even exchange of equipment and no appropriation of additional funds.

SECTION 3: That all ordinances or parts of ordinances in conflict herewith are hereby repealed to the extent of the conflict.

SECTION 4: That the provisions of this Ordinance are hereby declared to be severable, and if any section, phrase or provision shall be declared or held invalid, such invalidity shall not affect the remainder of the sections, phrases or provisions.

SECTION 5: It is hereby found and determined that the Street Department has an immediate need for an excavator to accomplish projects; that delivery of such equipment can take quite some time and may result in work delays; that the adoption of this Ordinance is immediately necessary to insure the proper and orderly growth of the City of North Little Rock, Arkansas and is necessary for the immediate preservation of the public health, safety and welfare; THEREFORE, an emergency is hereby declared to exist, and this Ordinance shall be in full force and effect from and after its passage and approval.

PASSED:

APPROVED:

Mayor Joe A. Smith

SPONSOR:

ATTEST:



Mayor Joe A. Smith

by AF

Diane Whitbey, City Clerk

APPROVED AS TO FORM:



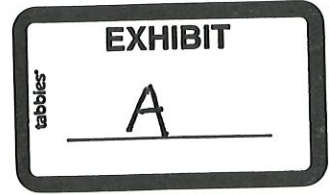
Amy Beckman Fields, City Attorney

PREPARED BY THE OFFICE OF THE CITY ATTORNEY/b

FILED <u>11:55</u> A.M. _____ P.M.
By <u>A. Fields</u>
DATE <u>11-21-17</u>
Diane Whitbey, City Clerk and Collector North Little Rock, Arkansas
RECEIVED BY <u>S. Ussery</u>



November 14, 2017
Mr. Patrick Lane, Director
**NORTH LITTLE ROCK STREET DEPT.
1124 ORANGE STREET
NORTH LITTLE ROCK, AR 72114**



Mr. Lane,

We are pleased to offer for your consideration the following **HYUNDAI Construction Equipment** product.

1 – HYUNDAI R60CR-9A HYDRAULIC EXCAVATOR

Equipped As Follows:

- YANMAR 4TNV98 TIER III DIESEL ENGINE 60 H.P.
- ENVIRONMENTAL CAB W/ AIR COND./HEAT, Advanced Color Control Monitor Cluster, RearView Camera, AM/FM/MP3/Blue-Tooth Stereo, Multi-Function Control Joysticks, Tinted Glass
- FRONT CAB GUARD PROTECTOR
- 9'6" BOOM / 6'6" ARM
- QUICK-COUPLER ARRANGEMENT-MANUAL
24", 18" HCE HEAVY DUTY BUCKET, 36" CLEANOUT BUCKET
- DOUBLE ACTING AUXILIARY HYDRAULIC CIRCUIT
- 15" Rubber Track Arrangement
- HYUNDAI HDB50 HYRAULIC BREAKER 1200 FL. LB. IMPACT FORCE
- OPERATING WEIGHT 11,890 LBS.

PRICE.F.O.B. N.L.R.,AR.....\$ 95,659.00*

3 YEAR / 3000 HOUR FULL MACHINE WARRANTY

5 YEAR / 5000 HOUR POWERTRAIN WARRANTY

LESS TRADE-IN:

(1) 2003 WIRTGEN W1900DC COLD MILLING MACHINE/0920.0175

Trade Allowance.....\$ 95,659.00

Net Trade Difference.....\$ 00.00

Sincerely,

Keith Pfeiffer

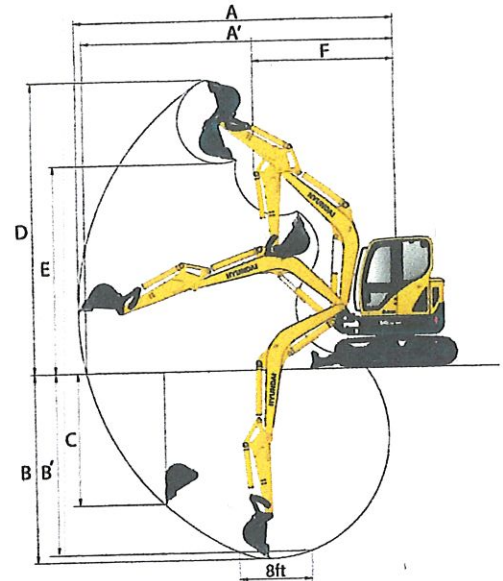
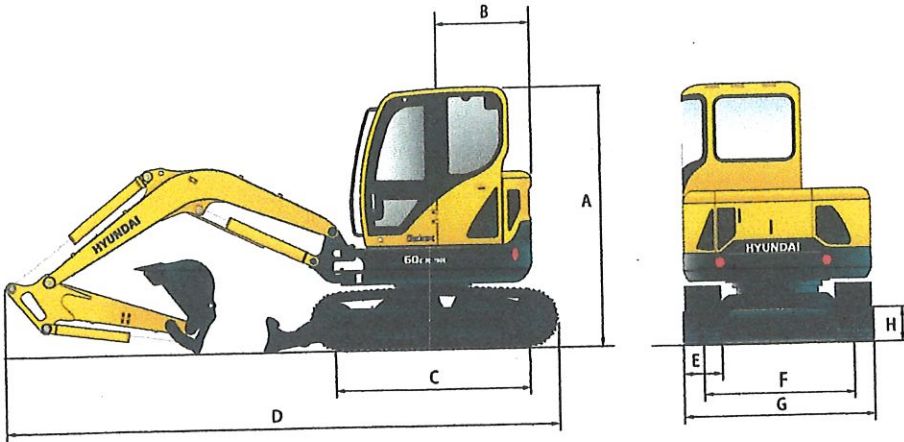


Equipment Management, Inc.



Dimensions & Working Range

R60CR-9A DIMENSIONS



R60CR-9A DIMENSIONS

		mm (ft-in)	
A Overall height of cab	2,550 (8' 4")	E Track shoe width	Steel 380 (1' 3") Rubber 400 (1' 4")
B Tail swing radius	1,080 (3' 7")	F Track gauge	1,600 (5' 3")
C Tumbler distance	1,990 (6' 6")	G Overall width	2,000 (6' 7")
D Overall length	5,600 (18' 4")	H Ground clearance	380 (1' 3")

BUCKETS

Capacity		Width		Weight
SAE heaped	CECE heaped	Without side cutters	With side cutters	
0.07 m ³ (0.09 yd ³)	0.06 m ³ (0.08 yd ³)	315 mm (12.4")	360 mm (14.2")	115 kg (255 lb)
0.18 m ³ (0.24 yd ³)	0.15 m ³ (0.20 yd ³)	670 mm (26.4")	740 mm (29.1")	170 kg (375 lb)

R60CR-9A WORKING RANGE

		mm (ft-in)	
Boom length		2,900 (9' 6")	
Arm length		1,480 (4' 10")	1,900 (6' 3")
A Max. digging reach		6,150 (20' 2")	6,480 (21' 3")
A ¹ Max. digging reach on ground		6,010 (19' 9")	6,350 (20' 10")
B Max. digging depth		3,570 (11' 9")	3,990 (13' 1")
B ¹ Max. digging depth (8 ft)		3,160 (10' 5")	3,620 (11' 11")
C Max. vertical wall digging depth		3,040 (9' 12")	3,360 (11' 0")
D Max. digging height		5,680 (18' 8")	5,850 (19' 2")
E Max. dumping height		3,930 (12' 11")	4,100 (13' 5")
F Min. swing radius		2,420 (7' 11")	2,510 (8' 3")

STANDARD EQUIPMENT

ISO standard cabin

- Cabin TOPS ISO 12117 (ROPS ISO 12117-2)
- FOG ISO 10262 Level I (FOPS ISO 3449 Level I)
- All-weather steel cab with all-around visibility
- Safety glass windows
- Rise-up type windshield wiper
- Sliding fold-in front window
- Sliding side window
- Lockable door
- Accessory box and ashtray

Air-conditioner and heater

- Travel alarm
- Quick coupler with piping

Centralized monitoring

- Engine speed
- Gauges
 - Fuel-level gauge
 - Engine coolant temperature gauge
- Warning Indicators
 - Fuel-level
 - Engine oil pressure
 - Engine coolant temperature
 - Hydraulic oil temperature
 - Low battery
 - Air cleaner clogging
- Fuel prefilter
- Rubber track shoes (400 mm I 1' 4")
- Pattern-change lever
- Additional counterweight (200 kg I 440 lb)
- Door and cab locks, one key
- Radio / USB player with remote control

Outside rearview mirror

- Single-acting piping kit (breaker, etc)
- Double-acting piping kit (clamshell, etc.)
- Fully adjustable suspension seat with seat belt
- Console box tilting system (LH.)
- Two front working lights
- Electric horn
- Battery (1 x 12 V x 100 Ah)
- Battery master switch
- 12-volt power supply
- Automatic swing brake
- Removable reservoir tank
- Water separator, fuel line
- Mono boom (2.9 m I 9' 6")
- Arm (1.48 m I 4' 10")
- Track rail guard
- Starting aid (air grid heater) cold weather
- Hyundai bucket (0.18 m³ / 0.24 yd³)

OPTIONAL EQUIPMENT

- Beacon lamp
- Accumulator
- Long arm (1.9 m I 6' 3")

- Tool kit
- Cabin rear work lamp
- Safety lock v/v for boom cylinder with overload warning

- Safety lock v/v for arm cylinder
- Steel track shoes (380 mm / 14")
- Rearview camera

Hyundai R60CR-9A

Specifications

Net power 63 hp
(47 kW) at 2,200 rpm

Operating weight
6,100 kg (13,450 lb)

Bucket breakout force
(SAE) 36.6 kN (8,220 lb)

Max dig depth
3,570 mm (11'9")

ENGINE

MODEL		YANMAR 4TNV98C	
Type		Water-cooled, 4-cycle diesel 4 cylinders in line, direct injection, low emission	
Rated flywheel horsepower	SAE J1995 (gross)	64.7 HP (48.3 kW) at 2,200 rpm	
	J1349 (net)	63 HP (47.0 kW) at 2,200 rpm	
Max. torque		24 kgf·m (174 lbf·ft) at 1,560 rpm	
Bore X stroke		98 mm (3.86") x 110 mm (4.33")	
Piston displacement		3,319 cc (203 cu in)	
Battery		1 x 12 V x 100 Ah	
Starting motor		12V-3.0 kW	
Alternator		12V-80 Amp	

HYDRAULIC SYSTEM

MAIN PUMP		Variable-displacement piston pumps + gear pump	
Type			
Max. flow	2 X 55 l/min (14.5 gpm) + 36.6 l/min (9.6 gpm) at 2,000 rpm		
Sub-pump for pilot circuit	Gear pump		

Cross-sensing and fuel-saving pump system

HYDRAULIC MOTORS

Travel	Two-speed axial piston motor with counter balance valve and parking brake
Swing	Axial piston motor with automatic brake

RELIEF VALVE SETTING

Implement circuits	220 kgf/cm ² (3,130 psi)
Travel circuit	220 kgf/cm ² (3,130 psi)
Swing circuit	220 kgf/cm ² (3,130 psi)
Pilot circuit	30 kgf/cm ² (430 psi)
Service valve	Installed

HYDRAULIC CYLINDERS

No. of cylinders bore X stroke	Boom: 1-110 x 715 mm (4.3" x 28.1")
	Arm: 1-85 x 840 mm (3.3" x 33.1")
	Bucket: 1-80 x 660 mm (3.1" x 26.0")
	Boom swing: 1-95 x 519 mm (3.7" x 20.4")
	Dozer blade: 1-110 x 224 mm (4.3" x 8.8")

TRAVEL SYSTEM

Drive method	Full hydrostatic type
Drive motor	Axial piston motor, in-shoe design
Reduction system	Planetary reduction gear
Max. drawbar pull	5,300 kgf (11,700 lbf)
Max. travel speed (high) / (low)	4.0 km/hr (2.5 mph) / 2.2 km/hr (1.4 mph)
Gradeability	35° (70%)
Parking brake	Multi-wet disc

CONTROLS

Pilot-pressure-operated joysticks and pedals with detachable lever provide almost effortless and fatigueless operation.

Pilot control	Two joysticks with one safety lever (LH): Arm swing, Boom swing (RH): Boom and bucket (ISO)
Traveling and steering	Two levers with pedals
Engine throttle	Electric, dial type

SWING SYSTEM

Swing motor	Axial piston motor
Swing reduction	Planetary gear reduction
Swing bearing lubrication	Grease-bathed
Swing brake	Multi wet disc
Swing speed	8.8 rpm

COOLANT AND LUBRICANT CAPACITY

(Refilling)	liter	US gal
Fuel tank	82.0	21.7
Engine coolant	11.0	2.9
Engine oil	11.6	3.1
Final drive (each)	1.2	0.3
Hydraulic tank	60.0	15.9
Hydraulic system	110.0	29.1

WEIGHT (APPROXIMATE)

Operating weight, including 2,900 mm (9' 6") boom, 1,480 mm (4' 10") arm, SAE heaped 0.18 m³ (0.24 yd³) excavator bucket, 400 mm (15.8") rubber track, lubricant, coolant, full fuel tank, hydraulic tank, 670 kg (1,480 lb) counterweight and the standard equipment.

Operating weight (cab)	6,100 Kg (13,450 lb)
Ground pressure (cab)	0.35 kg/cm ² (4.98 psi)

UNDERCARRIAGE

X-leg type center frame is integrally welded with reinforced box-section track frames. The undercarriage includes lubricated rollers, track adjusters with shock absorbing springs and sprockets, and track chain with triple grouser shoes.

Center frame	X - leg type
Track frame	Pentagonal box type
No. of track shoes on each side	40
No. of upper rollers on each side	1
No. of lower rollers on each side	5

R60CR-9A Lifting Capacity ISO Condition 2



Rating over front



Rating over side or 360 degree

Boom: 2.9 m (9' 6") / Arm: 1.48 m (4' 10") / Bucket: 0.18 m³ (0.24 yd³) SAE heaped / Dozer blade down / Counterweight 670 kg (1,480 lb)

Lift-point height m (ft)	Lift-point radius														At max. reach					
	2.0m (6.6ft)		2.5m (8.2ft)		3.0m (9.8ft)		3.5m (11.5ft)		4.0m (13.1ft)		4.5m (14.8ft)		5.0m (16.4ft)		Capacity	Reach				
	Front	Side	Front	Side	Front	Side	Front	Side	Front	Side	Front	Side	Front	Side	m ³	m (ft)				
4.0m 13.1ft	kg							*1300	*1300	*1370	1060					*1200	990	4.15		
	lb							*2870	*2870	*3020	2340					*2650	2190	(13.6)		
3.0m 9.8ft	kg							*1440	1300	*1400	1050	*1380	870			*1110	770	4.81		
	lb							*3180	2870	*3090	2320	*3050	1910			*2450	1700	(15.8)		
2.0m 6.6ft	kg					*2240	1560	*1860	1240	*1650	1010	*1510	840	*1430	710	*1120	680	5.13		
	lb					*4930	3450	*4110	2720	*3630	2220	*3340	1860	*3160	1570	*2470	1500	(16.8)		
1.0m 3.3ft	kg					*2950	1450	*2310	1160	*1930	960	*1690	810	*1520	690	*1200	650	5.20		
	lb					*6510	3190	*5090	2560	*4250	2120	*3720	1780	*3350	1530	*2640	1440	(17.1)		
0.0m 0.0ft	kg					*2150	1860	*3150	1400	*2510	1120	*2080	930	*1780	790	*1540	680	*1380	670	5.03
	lb					*4750	4100	*6940	3090	*5530	2470	*4580	2050	*3920	1730	*3380	1500	*3050	1480	(16.5)
-1.0m -3.3ft	kg	*2870	2800	*3690	1870	*2930	1400	*2390	1110	*1990	920	*1640	780			*1570	760	4.58		
	lb	*6330	6160	*8140	4120	*6470	3080	*5270	2450	*4380	2030	*3610	1730			*3460	1680	(15.1)		
-2.0m	kg	*3590	2850	*2810	1910	*2270	1430	*1820	1140							*1570	1040	3.75		